

Alliance Française de Lyon

Student Guideline

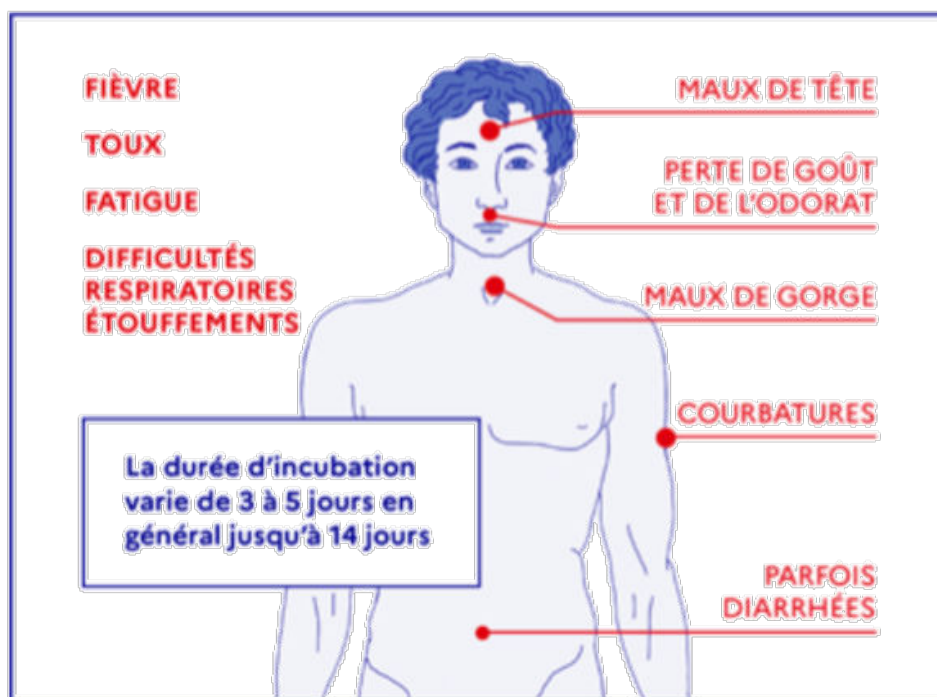
Extract from AFLyon health safety procedure



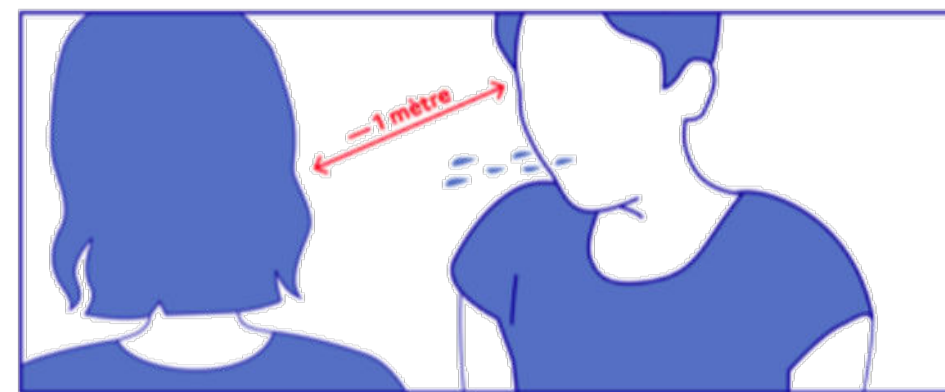
COVID-19
Coronavirus

LES INFORMATIONS ESSENTIELLES SUR LE COVID-19

Quels sont les signes ?



Comment se transmet-il ?



1

Face à face pendant au moins 15 minutes

2

Par la projection de gouttelettes

5 BARRIÈRES



Lavez-vous très
régulièrement les mains



Utilisez un mouchoir à
usage **unique** et jetez-le



Toussez ou éternuez
dans **votre coude** ou
dans **un mouchoir**



Saluez sans se serrer la
main, évitez les
embrassades

La distance sociale préconisée



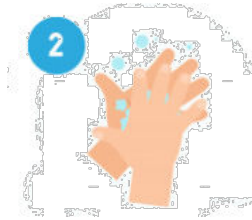
HOW TO WASH YOUR HANDS EFFICIENTLY



Wash for minimum 30 secondes



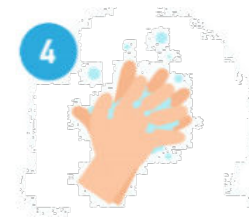
WATER & SOAP



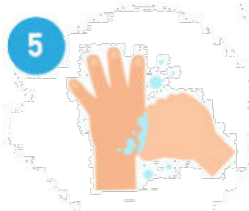
PALM TO PALM



BACK OF YOUR HANDS



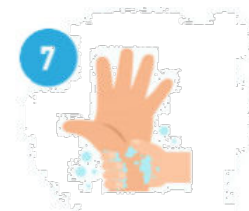
BETWEEN YOUR FINGERS



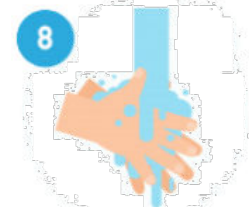
YOUR THUMBS



YOUR NAILS



WRISTBANDS



RINSE ABUNDANTLY



**DRY YOUR HANDS WITH
DISPOSABLE TISSUES**



AT THE ALLIANCE FRANCAISE DE LYON



**Disinfect
your hands**



**Hold the mask
by the ear loops
and place a loop
around each ear**



**Hold both of the ear loops
together and lift and remove
the mask without touching
the front of the mask.**



**Disinfect
your hands
again**



SCHOOL ENTRANCE/EXIT



- **Entrance: 11 rue Pierre Bourdan**

You are required to wash your hands with hydro-alcoholic gel before entering the school. We will check that you are registered for a course..



- **Exit :** leave the classroom right after the end of the course, follow the student circulation directions and respect the physical distancing of 1 meter. Do not put your hands on the stair railings.

- **Bike parking area :** you can use it while respecting the physical distancing of 1 meter.



FRONTDESK/REGISTRATIONS/ EDUCATION OFFICE



1 STUDENT ONLY



IN YOUR CLASSROOM: 12 STUDENTS MAXIMUM



Hydro-alcoholic gel
will be available



Teachers will wear a face mask or
a protective visor



You are required to bring your own materials (pens, notebook, textbook, etc.)
necessary to follow the course.

symbols to be used



SENS INTERDIT

Please do not enter this area

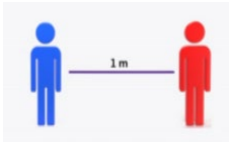


PLEASE follow the circulation directions



PHYSICAL CONTACT IS NOT ALLOWED

Do not hug or kiss people, no « Tchek »



PHYSICAL DISTANCING OF 1 METER **MINIMUM**

USE WASHROOMS LOCATED ON THE SAME FLOOR AS
YOUR CLASSROOM ONLY



Se laver ou se désinfecter les mains



Use washrooms **1 by 1.**



Désinfection possible de l'espace commun



Disinfection of frequently touched surfaces

OTHER INFORMATION

The following areas will be closed until further notice :

- **Vending machines**
- **Library located on the 1st floor**
- **Welcoming Hall**

The following areas will be restricted :

- **Lobby and garden (to enter and exit the school only)**
- **The rooftop terrace located on the 1st floor will be for smokers only**

Intensive cleaning

- **Our cleaning team will regularly clean and disinfect frequently touched surfaces (such as door handles, washrooms, table, chairs, etc.)**