



**STUDENT PRACTICAL GUIDE** *Lyon*

**2026**

# OUR SERVICES

## Registration & accommodation :

Our team is available to answer your questions about the school, courses, and the registration or pre-registration process. We also support you with questions about payments and student cards (for students staying more than 4 months with us, please bring an ID photo).



## Registration



[www.aflyon.org](http://www.aflyon.org)

[info@aflyon.org](mailto:info@aflyon.org)

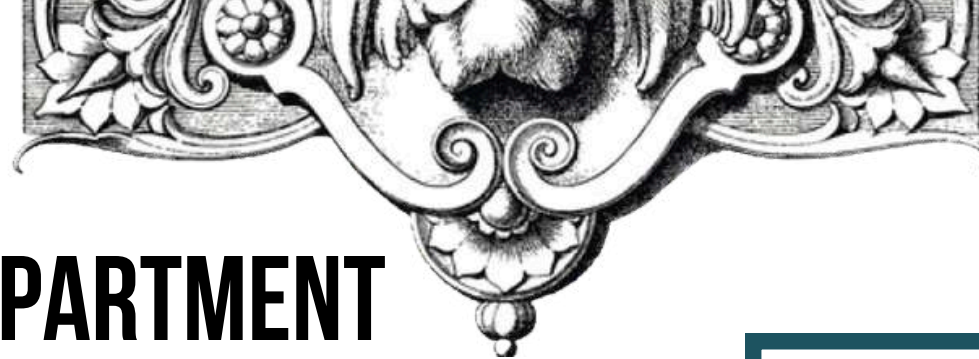


11 Rue Pierre  
Bourdan – Lyon 3e

## You can also :

- Request an attendance or enrollment certificate
- Use our accommodation booking service (choose between university residence, host family, or private student/hotel residence)





# EDUCATIONAL SERVICES DEPARTMENT

## COURSES & LEARNING PLATFORM

To ensure quality teaching and proper academic follow-up, students enter into a mutual commitment agreement outlined in the general terms and training contract.

Course tracking is available on the [Apolearn](#) platform.

## CERTIFICATIONS

The Alliance Française de Lyon is an official examination center for:

TCF TP SO, TCF IRN, TCF Canada, DELF, DALF, and DAEFLE.

You can register online or at the registration office on Thursdays from 8:30 AM to 4:30 PM.



## OTHER SERVICES

### Resource center

Located on the mezzanine level, the resource center is a study and reading space. It is open every day from 9 a.m. to 6 p.m. to all students enrolled at the Alliance Française of Lyon.

On-site, you will find resources to help strengthen your French skills according to your level: French learning methods, grammar and vocabulary books, dictionaries, documentaries, comic books, audiobooks, and more.

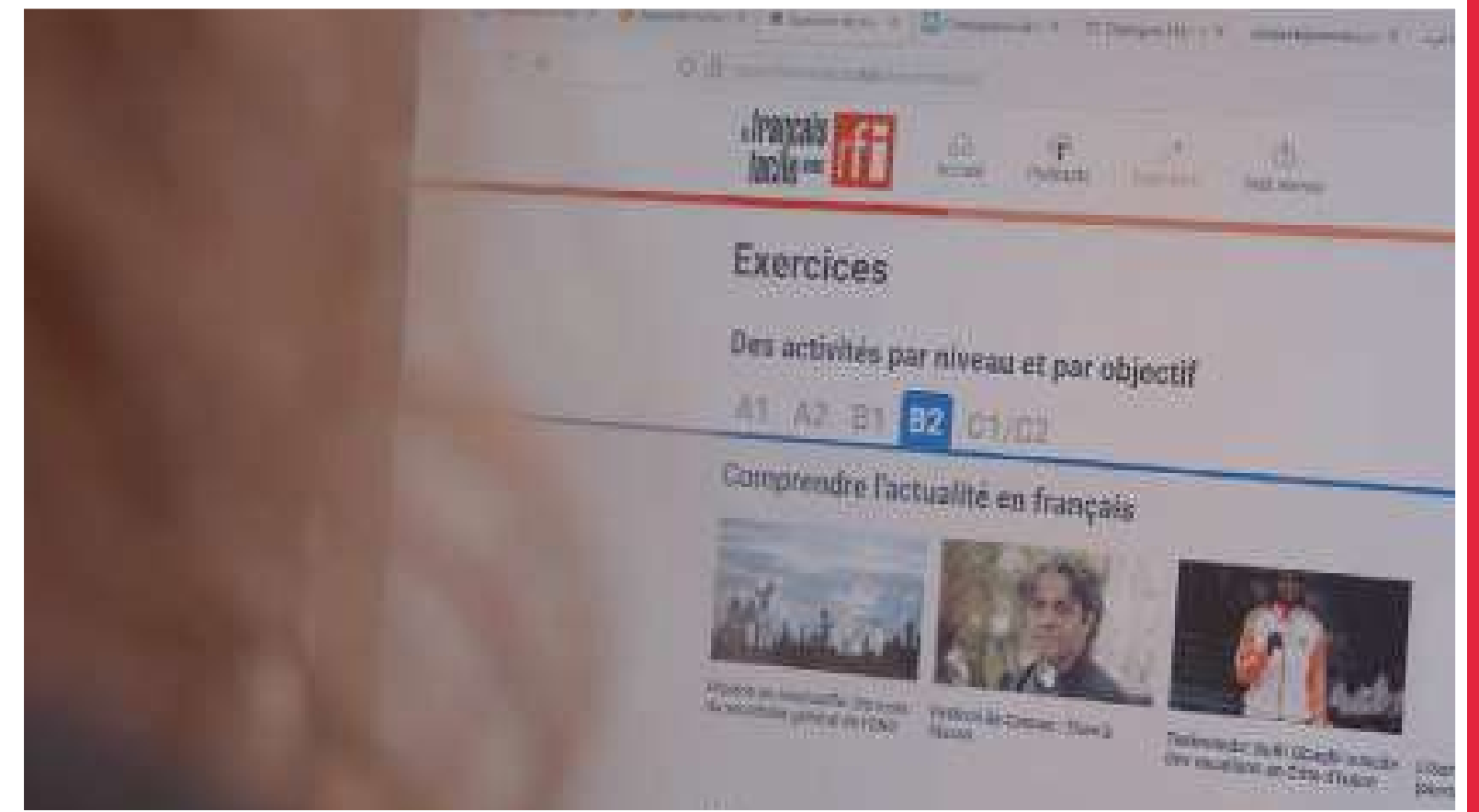
## REJOIGNEZ NOTRE COMMUNAUTÉ



### Computers & Wi-Fi

You have access to a self-service computer area with Wi-Fi on the mezzanine level (in the main hall, above the toilets).

If you bring your own laptop, free Wi-Fi is available throughout the building.



# OTHER SERVICES

## Where to eat nearby :

 [Cours de la Liberté](#)

 [Rue Paul Bert](#)

 [Place Gabriel Péri](#)

 [Around la Place Guichard](#)




## Where to buy books :

 [Librarie du Tramway](#)

 [Librarie Decitre](#)

 [Gilbert Joseph](#)

 [Marché des bouquinistes](#)  
(open Monday–Sunday, 9 AM–9 PM)

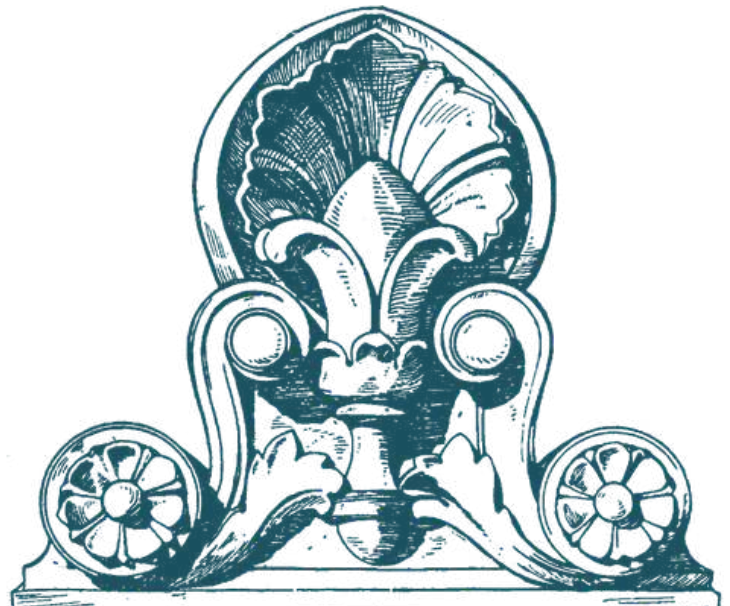
## Where to stay for the first nights :

 [Slo Hostel](#)

 [HO 36 Hostel](#)

 [Airbnb](#)

 [HostelWorld](#)



# ADMINISTRATIVE *procedures*

## Long-stay visa

**If you are a citizen of the European Union :** a valid national ID card or passport is the only required document. Upon arrival, you do not need to complete any formalities with the French authorities.

If you are not a citizen of the European Union, check whether you need a visa on the [France-Visas](#) website. If you obtain a VLS-TS visa (long-stay student visa), you will need to validate it on the [official website after your arrival in France](#). By paying the required tax stamp, you will be allowed to stay in the country for the approved duration. More information is available on the [Campus France](#) website.



# ADMINISTRATIVE *Procedures*

## Residence Permit

If you have a VLS-TS visa and plan to continue your studies in France next year, you must **submit the application** at least 1 month before your visa's expiration date to obtain your residence card. A Students Welcome Desk is organized in September and October to help you with your administrative procedures. It is located at the **University of Lyon**. More info on Facebook. You can also check the website of la **Préfecture du Rhône** or go there directly without an appointment from Monday to Friday from 9:00 AM to 12:00 PM (it is highly recommended to arrive at least 15 minutes before the doors open due to heavy crowds).

Our advice: Tax stamps (timbres fiscaux) will be required. You can buy them online or at a bureau de tabac (tobacco shop where people buy cigarettes and newspapers).

**Our advice :** Tax stamps (timbres fiscaux) will be required. You can buy them **online** or at a bureau de tabac (tobacco shop, where people buy cigarettes and newspapers).

## Mail

In France, a large majority of administrative procedures go through the mail and therefore through La Poste. To find out about the services offered, **click here**. The closest post office to the Alliance Française de Lyon is located at **150 rue Pierre Corneille 69003 Lyon**. This post office also has an automatic change-making machine (we do not provide change at the reception desk).



# ADMINISTRATIVE *Procedures*

## Health

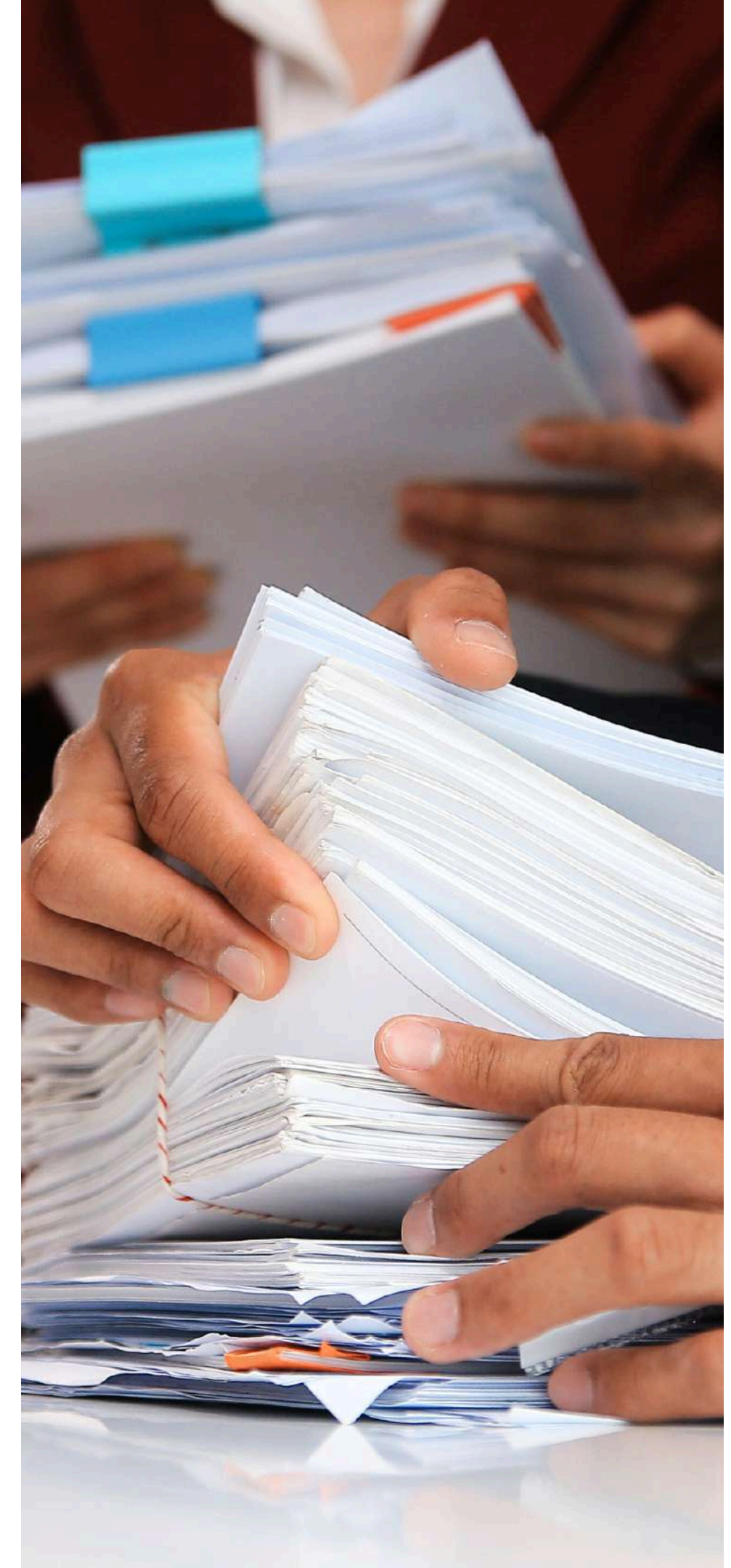
In France, the Sécurité Sociale (Social Security) reimburses your medical expenses if you are sick, have an accident, or are hospitalized. If you are enrolled at the Alliance Française de Lyon for more than 80 hours of classes/month for a duration of more than 3 months, you can benefit from French Social Security health insurance for free. To benefit from it, you must register online.

### Warning

International students staying for less than 3 months are not covered by French Social Security. If you are in this situation, we advise you to take out health insurance in your country of origin or French insurance that will be valid in France for the entire duration of your stay.

## How to register for Social Security?

- ✚ Register on [etudiant-etranger.ameli.fr](https://etudiant-etranger.ameli.fr) as soon as you have received your certificate of registration/enrollment and before your arrival in France.
- ✚ You will need to submit several supporting documents ([see the full list](#)).
- ✚ Then, you must follow these steps to gain access to the French healthcare system.
- ✚ It is unnecessary to take out private insurance in your country of origin.



# ADMINISTRATIVE *Procedures*

## What is student status?

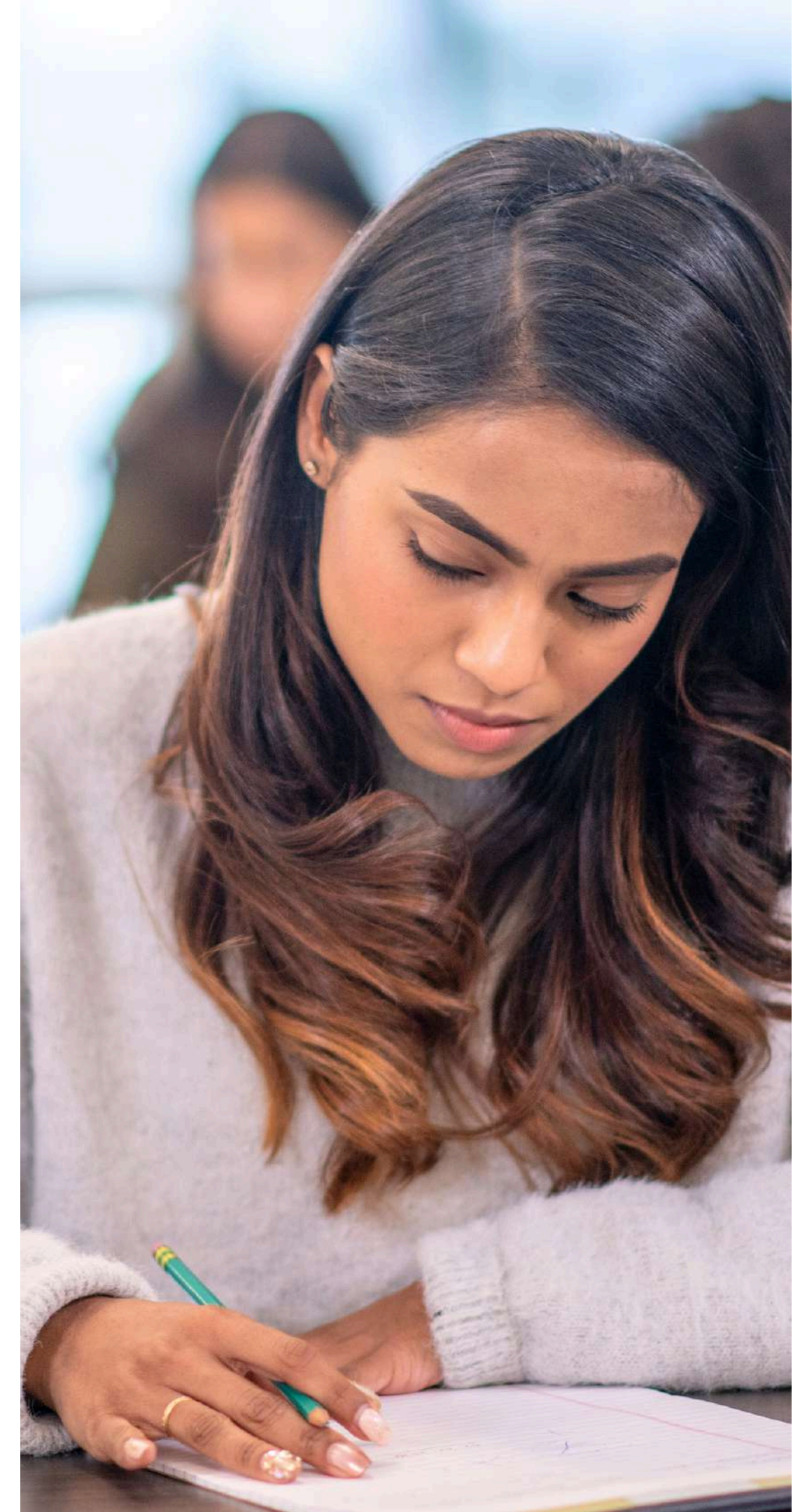
If you are enrolled at the Alliance Française de Lyon for more than 80 hours of classes/month for a duration of more than 3 months, you benefit from student status, which gives you the right:

To take advantage of specific student benefits (reduced rates on public transportation, cinema, theaters, etc.; access to CROUS cafeterias).

To benefit from health insurance (Social Security) for free.

### Please note

Please note : if you have a VLS-TS, this document authorizes you to work part-time (60% of the annual working hours, which is 964 hours) in France.



# ADMINISTRATIVE *Procedures*

## Bank

If you plan to stay in France for a long time, we advise you to open a French bank account to :

- Avoid paying bank fees
- Have a bank card and a checkbook. This is necessary for paying your rent as well as other administrative procedures.
- Benefit from housing assistance and medical expense reimbursements. Some banks offer free fees for the first year and/or free home insurance.

## Student Offer

BNP Paribas offers a special deal reserved for students of the Alliance Française de Lyon (subject to conditions).

### Documents to provide

- Your proof of residence in France.
- Your student ID card (or your acceptance letter).
- Your valid passport or ID card.



**Our branch :**



**BNP Lyon Saxe Gambeta**

# ADMINISTRATIVE *Procedures*

## Work and volunteering

You can work in France part-time (up to 60% of the legal working hours, which is a maximum of 964 hours per year) if you are :

- 1 A student visa holder
- 2 Enrolled at the Alliance Française de Lyon for at least 4 months with 80 hours of classes per month.

### *Check out job offers on :*

- The bulletin board located in the stairwell on the ground floor (RDC)
- [France Travail](#)
- Indeed: Emploi

### *Check out volunteering offers on :*

- The bulletin board located in the stairwell on the ground floor (RDC)
- Info Jeunes Lyon (Regional youth information council)



# GETTING AROUND *in Lyon*



## TCL Lyon

The company that manages public transportation in Lyon is called **Transports en Commun Lyonnais (TCL)**. On the network, there are 4 metro lines, 2 funicular lines, 7 tramway lines, and 136 bus lines.

**Subscriptions:** Each tram stop and metro station has a vending machine to buy tickets and renew TCL subscriptions.

It is possible to pay for a bus ticket on board the bus with your bank card. If you are staying in Lyon for more than a month, we strongly advise you to get a subscription. It can be ordered on the website (Click&Collect) or purchased at a **TCL agency**.

[Check the rates here](#)

## Vélov

For your trips around town and to discover the city, get around with "**Vélo'v**". This bike rental system allows you to use a bike 24/7. Lyon and Villeurbanne have around 350 stations.

[Check available offers here](#)

Other  
transportation

Avions

Aéroport Saint-Exupéry

Trains

Lignes SNCF  
Région Auvergne-Rhône-Alpes  
Rhône Express

Bus

Eurolines  
Flix Bus  
BlaBlaCar

## CULTURAL *Life*



### *Museum Cards*

The Carte Musées allows access, for one year, to the 6 municipal museums (list via the link below), for both permanent collections and temporary exhibitions. It also grants access to a reduced rate for the Musée des Confluences (€6) and the Musée Jean Couty (€4).

[Find out more](#)

### *Culture Card*

The Carte Culture gives access, for one year, to temporary and permanent exhibitions at the 6 municipal museums of the city of Lyon, as well as to the entire lending service of the Lyon Municipal Library.

[Find out more](#)



### *Culture Pass*

The Pass Culture includes 4 show tickets across an entire cultural season, valid in 57 cultural institutions throughout the Métropole de Lyon, as well as discounts for the Nuits Sonores festival. It is sold exclusively to students upon presentation of a student ID card (or enrollment certificate) for the current year at the price of €18.

[Find out more](#)

### *Art Cinemas*

Lyon, the birthplace of cinema, offers several must-visit addresses to discover French and foreign films, often independent movies in their original version with subtitles (VOST).



[Institut Lumière](#)



[Les Cinémas Lumières](#)



[Le Comoedia](#)



## GOING *further*



### *Sports and trails*

In addition to the Tête d'Or and Blandan parks, you can also do sports along the banks of the Rhône (quais du Rhône), enjoy the bike paths, visit the swimming pools, or use the Sport dans la Ville sports grounds. The City of Lyon also recommends discovery trails grouped together in an app.

[Find out more](#)

### *Shops and shopping*

In France, most shops and supermarkets are closed on Sundays and public holidays. Check the opening hours before going grocery shopping. To find the right places to go, consult the Lyon shopping guide.

[Find out more](#)



### *Visiting the region*

Lyon is ideally located 2 hours by train from Paris and 1 hour 40 minutes from the Mediterranean coast and the Alps. The region offers magnificent natural landscapes (high mountains, vineyards and valleys, volcanoes, lavender fields, etc.) and numerous UNESCO World Heritage sites (Hospices de Beaune, Chauvet-Pont d'Arc cave in Ardèche, etc.).

[Find out more](#)

### *Meeting the locals*

#### **Lyon City Greeter**

Make an appointment with a local from Lyon (lyonnais·e) for a free guided tour of the city.

[+ info](#)

#### **IStudent Lyon**

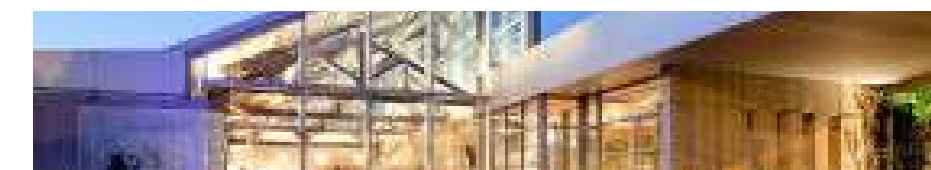
This association organizes activities and excursions.

[+ info](#)

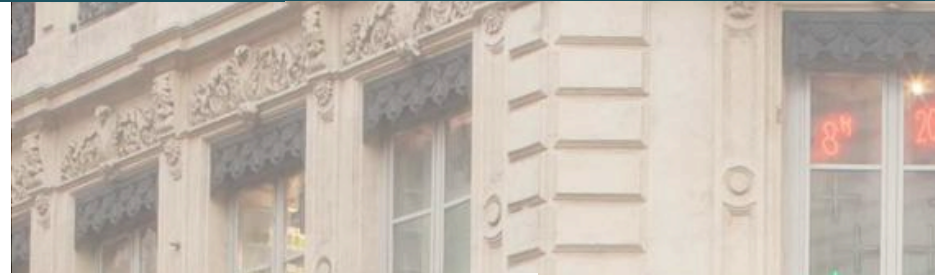
#### **Erasmus Cosmo Lyon**

An international student welcoming organization, it offers the "Buddy System" mentorship program, which aims to connect you with a French student.

[+ info](#)



# EMERGENCIES



Contacts	Numbers
Emergency number in Europe (SAMU)	112
Medical emergencies	15
Firefighters	18
Police	17
On-duty medical centers	+33 4 72 33 00 33
SOS Médecins	+33 4 78 83 51 51
Poison control center	+33 4 72 11 69 11
Dental emergencies	+33 4 72 10 01 01
AIDS Info (HIV/ AIDS)	+33 8 00 84 08 00
Gas safety	+33 8 10 43 31 42
Electricity safety	+33 9 72 67 50 69



## Night Pharmacy

### **Grande pharmacie Lyonnaise (24h/24h)**

Except Sunday from 7:00 PM to 12:00 AM  
22 rue de la République 69002 Lyon – Métro Cordeliers

### **Aprium Pharmacie des Gratte-Ciel (24h/24h)**

Except Sunday from 7:00 PM to 12:00 AM  
28 avenue Henri Barbusse 69100 Villeurbanne –Métro Gratte-Ciel

## Hospitals

### **Hôpital Edouard Herriot**

5 place d'Arsonval  
69003 Lyon - Métro Grange Blanche

### **Hôpital Lyon Sud**

Chemin du Grand Revoyet  
69310 Pierre-Bénite - Bus 88

### **Hôpital de la Croix-Rousse (24h/ 24)**

103 grand rue de la Croix-Rousse  
69004 Lyon -Métro C Hénon



## *Contact us*

We are at your disposal to support you in achieving your projects.

Telephone : +33 (0)4 78 95 24 72

Website : – [www.aflyon.org](http://www.aflyon.org)

E-mail : – [info@aflyon.org](mailto:info@aflyon.org)

Adresse : – 11 Rue Pierre Bourdan – 69003 Lyon